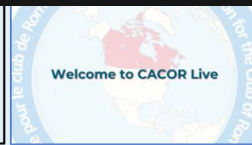


Welcome to this week's presentation & conversation hosted by the **Canadian Association for the Club of Rome**, a Club dedicated to intelligent debate & action on global issues.



The views and opinions expressed in this presentation are those of the speaker & do not necessarily reflect the views or positions of CACOR.

Keep Our Counties Great: Implementing Limits to Growth at the Local Level.

Description: Economic growth requires ever expanding materials and energy throughput that is unsustainable, and at odds with planetary biophysical limits. Our speaker will describe the aim of CASSE's *Keep Our Counties Great* initiative, and how local communities can opt out of the growth paradigm. A key blueprint for communities is their Comprehensive Plan that is the means to incorporate protection of a county's biocapacity—its ecological productivity—including the ecological services needed for human sustenance.

Biography: Dave Rollo is a Policy Specialist at the Center for the Advancement of the Steady State Economy (CASSE) focused on the *Keep Our Counties Great* program. With degrees in biology and plant sciences, Dave has also served in elected office as City Councilor in Bloomington, Indiana, for 22 years. During his tenure in office, Dave spearheaded numerous sustainability initiatives, served on many boards and commissions, and participated in creating several key planning documents for his community.

The presentation will be followed by a conversation, questions, & observations from the participants.

CACOR acknowledges that we all benefit from sharing the traditional territories of local Indigenous peoples (First Nations, Métis, & Inuit in Canada) and their descendants.



Website: canadiancor.com
Twitter: [@cacor1968](https://twitter.com/cacor1968)
YouTube: [Canadian Association for the Club of Rome](https://www.youtube.com/channel/UCa1m1m1m1m1m1m1m1m1m1m1m)
2024 Jul 17 Zoom #206

Keep Our Counties Great:
Implementing Limits to Growth at
the Local Level.

Dave Rollo

Center for the Advancement
of the Steady State Economy (CASSE)

CASSE Mission

The mission of CASSE is to advance the steady state economy, with stabilized population and consumption, as a policy goal with widespread public support.

Keep Our Counties Great:
Implementing Limits to Growth at
the Local Level.

Dave Rollo

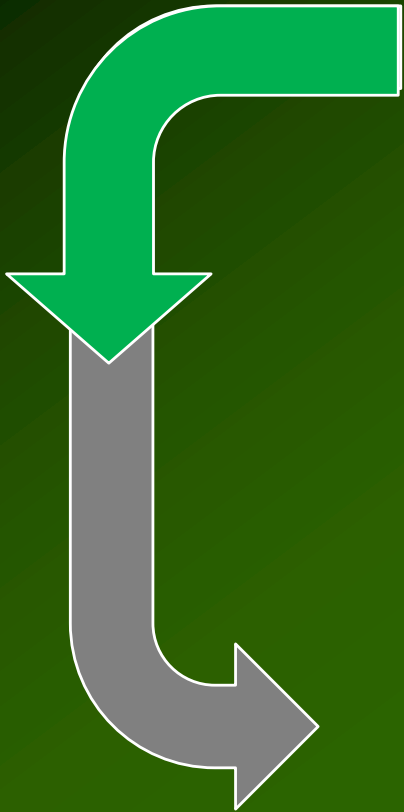
Center for the Advancement
of the Steady State Economy (CASSE)

Keep Our Counties Great:
Implementing Limits to Growth at
the Local Level.

Dave Rollo

Center for the Advancement
of the Steady State Economy (CASSE)





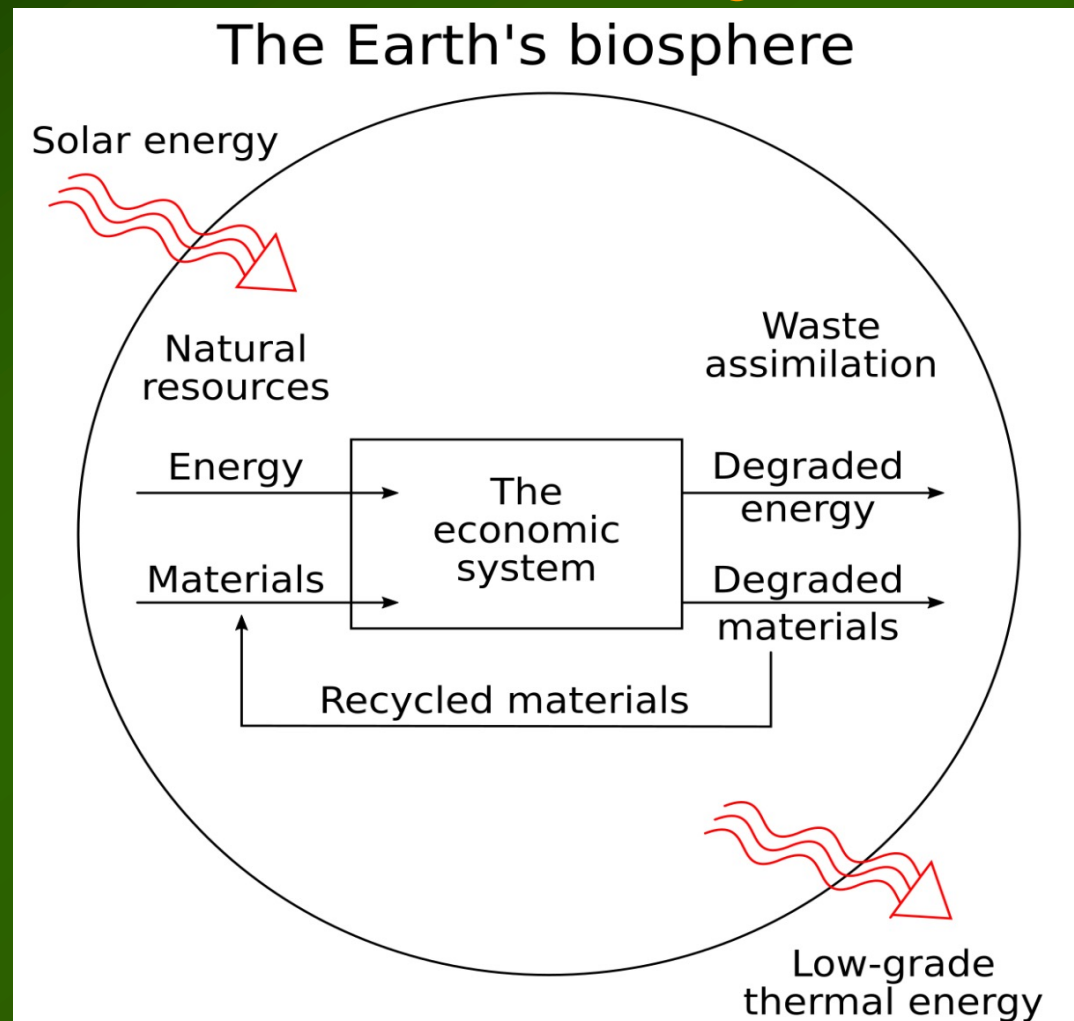
Keep Our Counties Great: Implementing Limits to Growth at the Local Level.

1. Understanding a steady state economy and near-term limits.
2. Why focusing on the local is important and strategic.
3. What is a comprehensive plan, and what would steady-state plan consist of?
4. What else can a county do?
5. Examples of great counties.

Keep Our Counties Great: Implementing Limits to Growth at the Local Level.

1. Understanding a steady state economy and near-term limits.
2. Why focusing on the local is important and strategic.
3. What is a comprehensive plan, and what would steady-state plan consist of?
4. What else can a county do?
5. Examples of great counties.

What is a Steady State Economy?



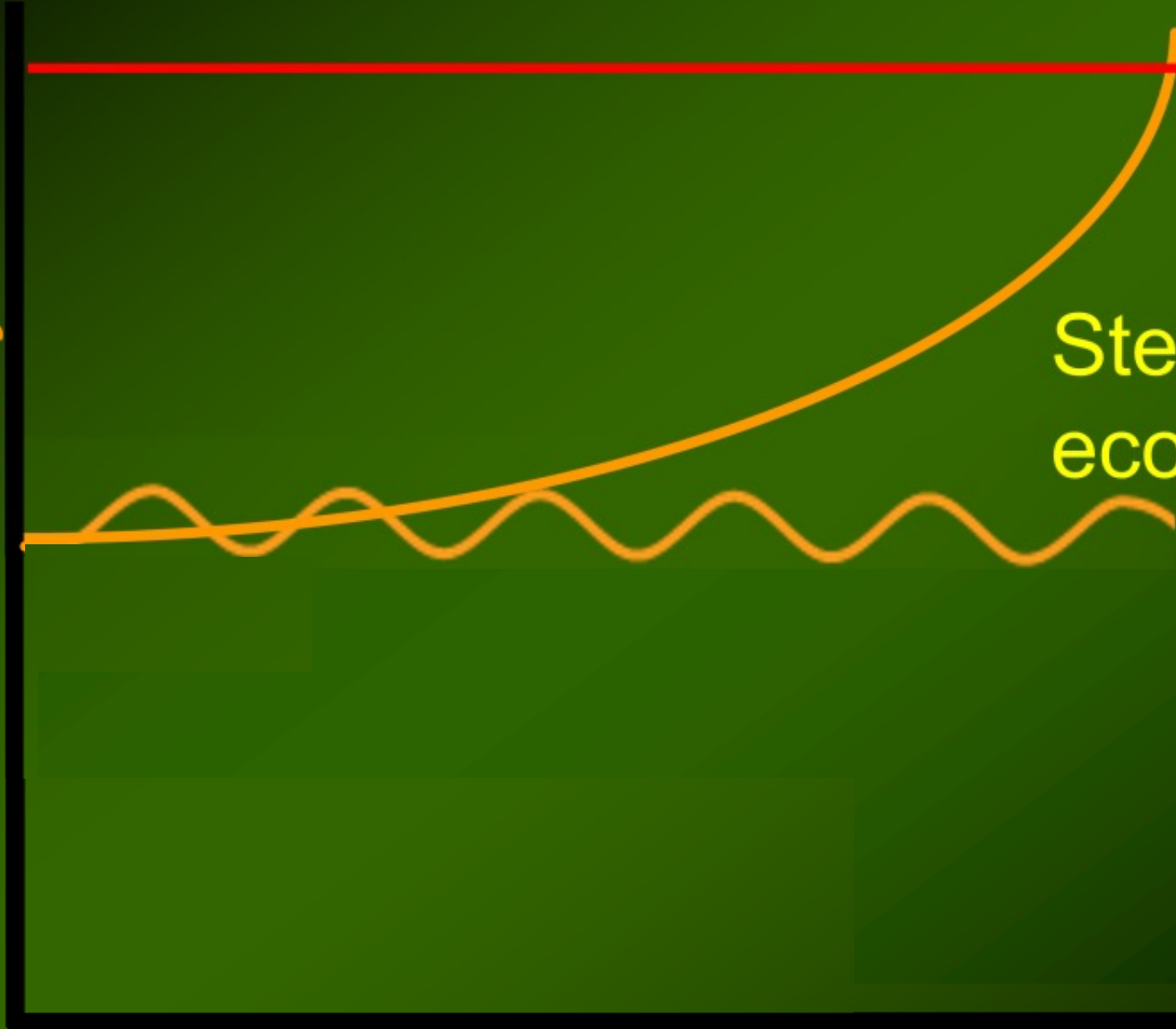
K

Economy

T

Unsustainable

Steady state
economy

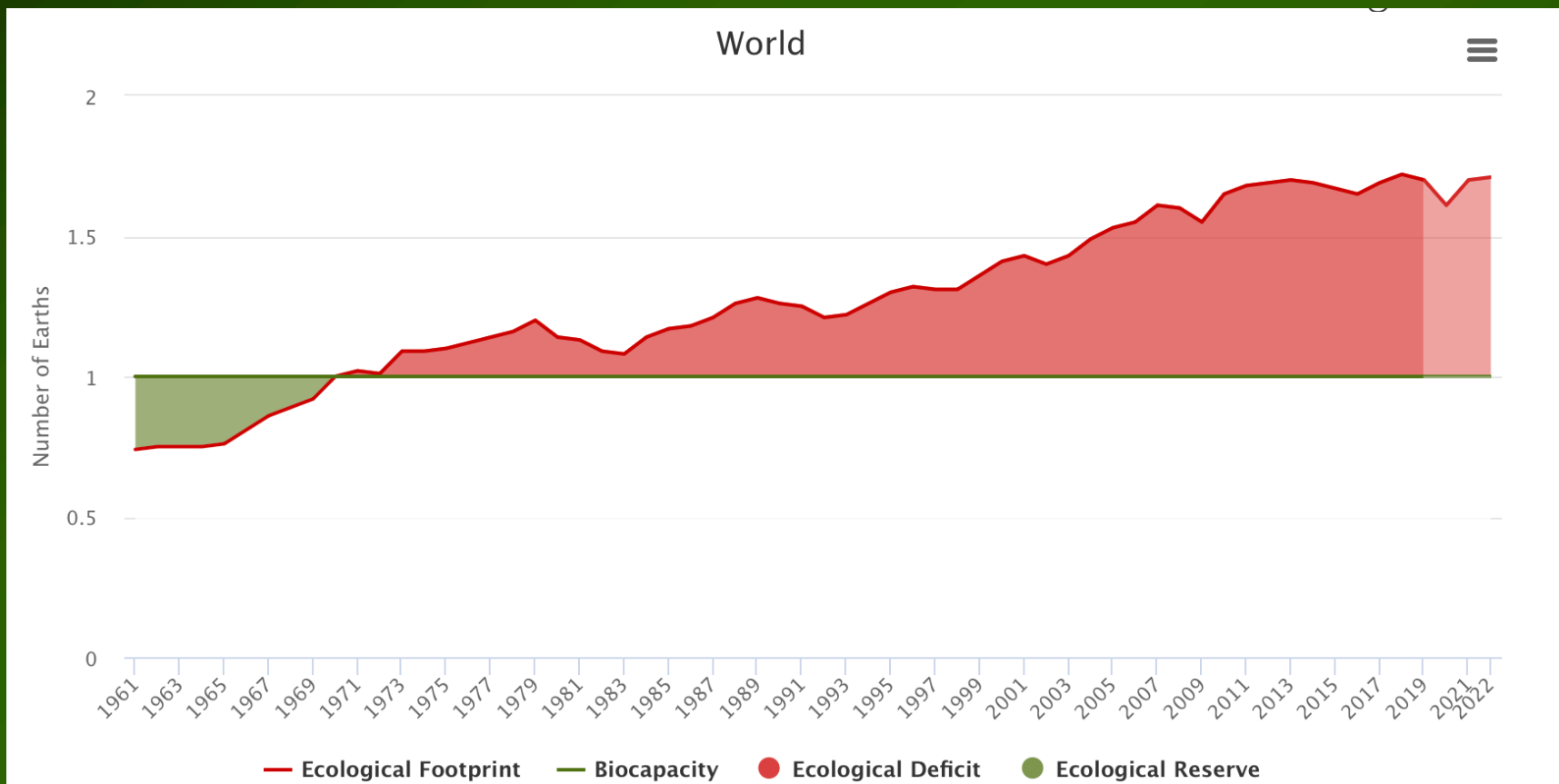


Sustainability



Venn Diagram Model

Biocapacity: The capacity of a biologically productive area to generate an on-going supply of renewable resources and to absorb its wastes.

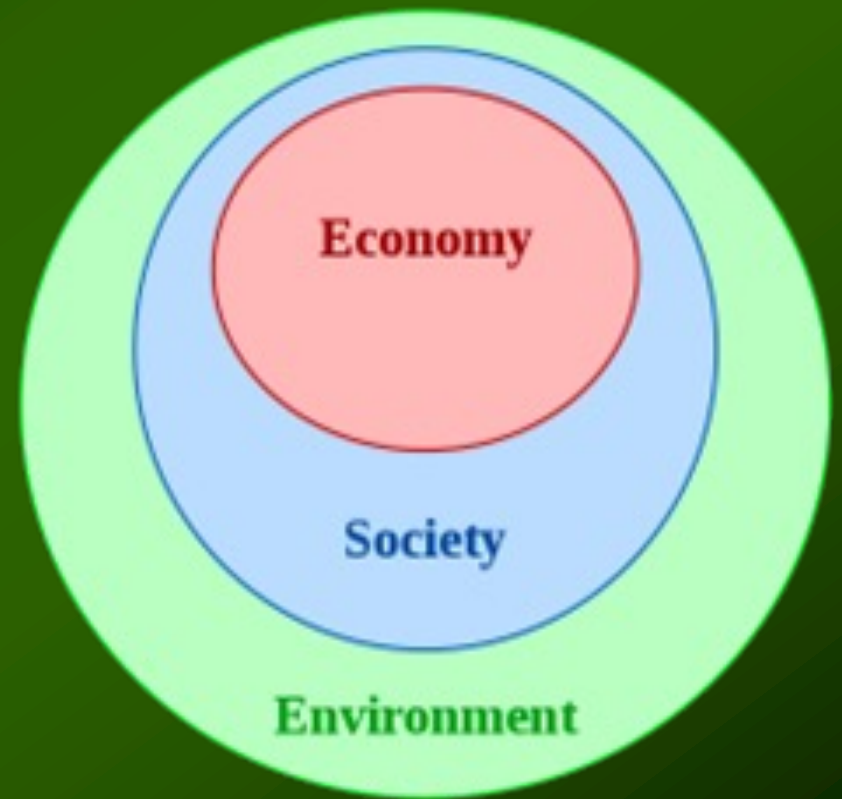


Sustainability

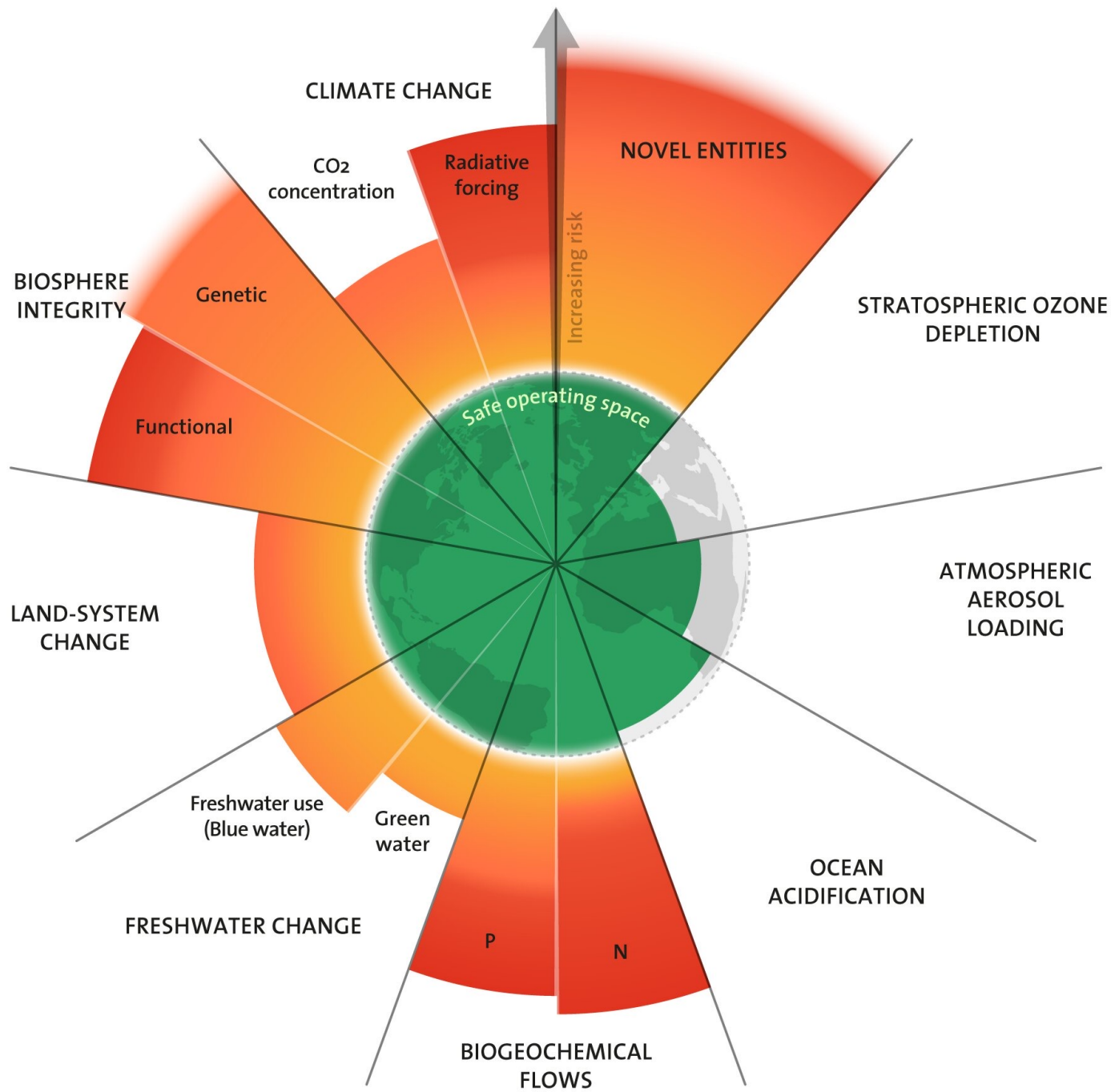


Venn Diagram Model

VS



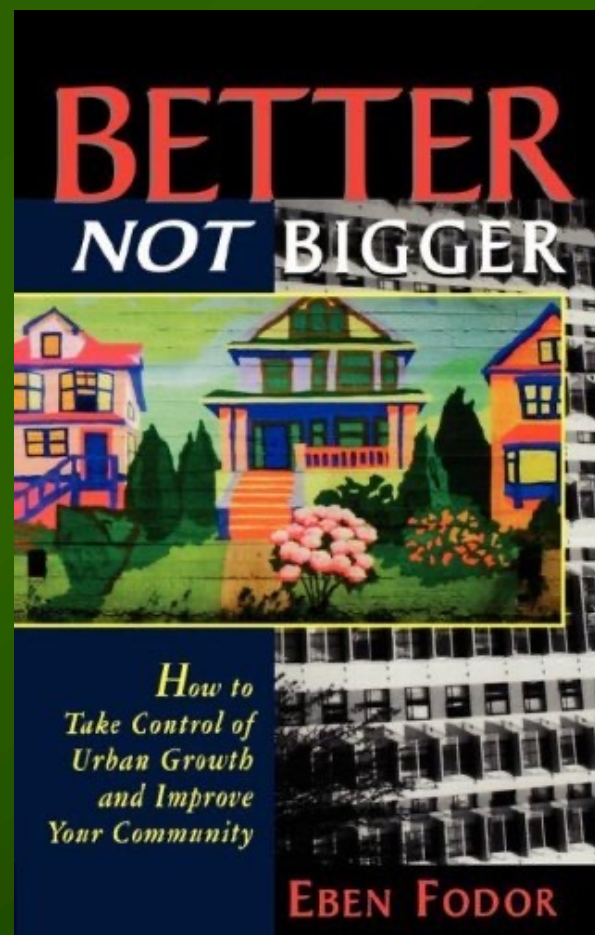
Nested Model



Azote for Stockholm Resilience Centre, based on analysis in Richardson et al 2023.

Keep Our Counties Great

There are costs of growth
at the local level.



Keep Our Counties Great

There are costs of growth:

- Ecological
- Monetary
- Quality of Life

Keep Our Counties Great

There are costs of growth:

- Ecological:
- Conversion of undeveloped land to human development. Habitat fragmentation
- Increasing energy/materials throughput locally
- Loss of farmland
- Waste production

Keep Our Counties Great

There are costs of growth:

- **Ecological**
- Monetary - Increase in taxes:
 - Roads
 - Schools
 - Utilities
 - Public safety
 - Government services
 - Social services
 - Loss of natural services

Keep Our Counties Great

There are costs of growth:

- Ecological
- Monetary
- Quality of Life:
 - Congestion
 - Pollution
 - Crime
 - Reduced access to greenspaces

Counting the Costs and Benefits of Growth:

A Fiscal Impact Analysis of Growth in the City of Charlottesville and Albemarle County, Virginia. Principal Investigator: **Craig Evans** with editorial assistance by **David Shreve**.

For every \$1 generated in revenue (based on 2008-2009 data), the services required by different land use categories in Albemarle County and the City of Charlottesville incur the following costs:

Land Use Categories	Albemarle County	Charlottesville
Single Family Homes	\$1.28	\$1.24
Multi-Family Homes	\$1.96	\$1.59
Mobile Homes	\$2.16	N/A
All Residential Land Uses Combined	\$1.41	\$1.37
Commercial	\$0.51	\$0.47
Industrial	\$0.44	\$0.44
Institutional (e.g., hospitals, libraries, churches)	\$1.53	\$1.24
University of Virginia (UVA)	\$1.03	\$1.28
Agriculture	\$0.20	N/A
Open Space/Recreation	\$1.28	\$1.64
Vacant Lands	not available	\$0.19
All Land Uses Combined	\$1.24	\$1.17

Keep Our Counties Great: Implementing Limits to Growth at the Local Level.

1. Understanding a steady state economy and near-term limits.
2. Why focusing on the local is important and strategic.
3. What is a comprehensive plan, and what would steady-state plan consist of?
4. What else can a county do?
5. Examples of great counties.

Keep Our Counties Great

Why focus on the local?

- Federal and State level governments are much more likely to have been “captured” by economic interests without recourse of citizens.
- Growth debates are rare at the national or state level, but quite often happen at the local municipal or county level.
- Citizens are closer to local governance – they can affect change by attending meetings, forming local groups, joining boards and commissions and running for office.

Keep Our Counties Great

Why focus on the local?

- Zoning Codes, Land Use Overlays, Greenspace and Conservancies, urban growth boundaries provide tools to limit growth and are within realm of local governance.
- Land use policies are a fundamental aspect of county planning. Comprehensive Plans (sometimes Master Plans). They typically refer to growth – often as desirable or benign – but they are often up for renewal or amending.

Keep Our Counties Great: Implementing Limits to Growth at the Local Level.

1. Understanding a steady state economy and near-term Limits.
2. Why focusing on the local is important and strategic.
3. What is a comprehensive plan, and what would steady-state plan consist of?
4. What else can a county do?
5. Examples of great counties.

Comprehensive Plan: Usually a 20 year outlook.

The primary document for guiding county or municipal:

- Land use, zoning, form and scale of the built environment
- Roads and transportation options
- Parks, greenspaces, farms, wetlands
- Climate policies
- Economic priorities
- Investments in social capital
- Housing priorities
- Culture and Identity



Comprehensive Plan: Usually a 20 year outlook.

The primary document for guiding county or municipal:

- Land use, zoning, form and scale of the built environment
- Roads and transportation options
- Parks, greenspaces, farms, wetlands
- Climate policies
- Economic priorities
- Investments in social capital
- Housing priorities
- Culture and Identity

Community Derived!



Comprehensive Plan: It is used by:

- The Administration
- City or County Departments
- Planners
- Development Community
- Economic Development Entities
- The Council
- Plan Commission
- Boards and Commissions
- Media



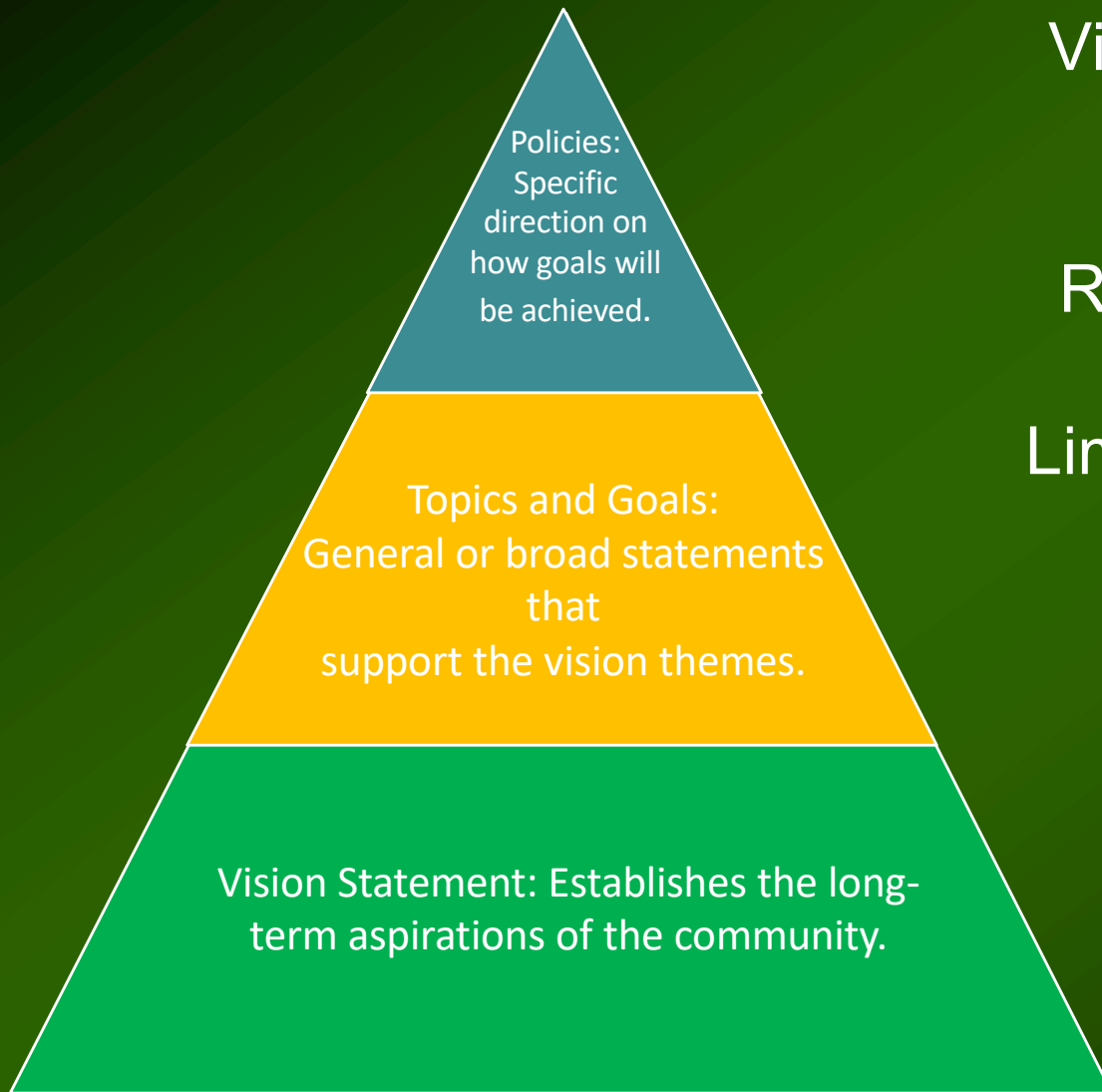
Policies:
Specific
direction on
how goals will
be achieved.

Topics and Goals:
General or broad statements that
support the vision themes.

Vision Statement: Establishes the long-term
aspirations of the community.

Basic form of a modern Comprehensive Plan

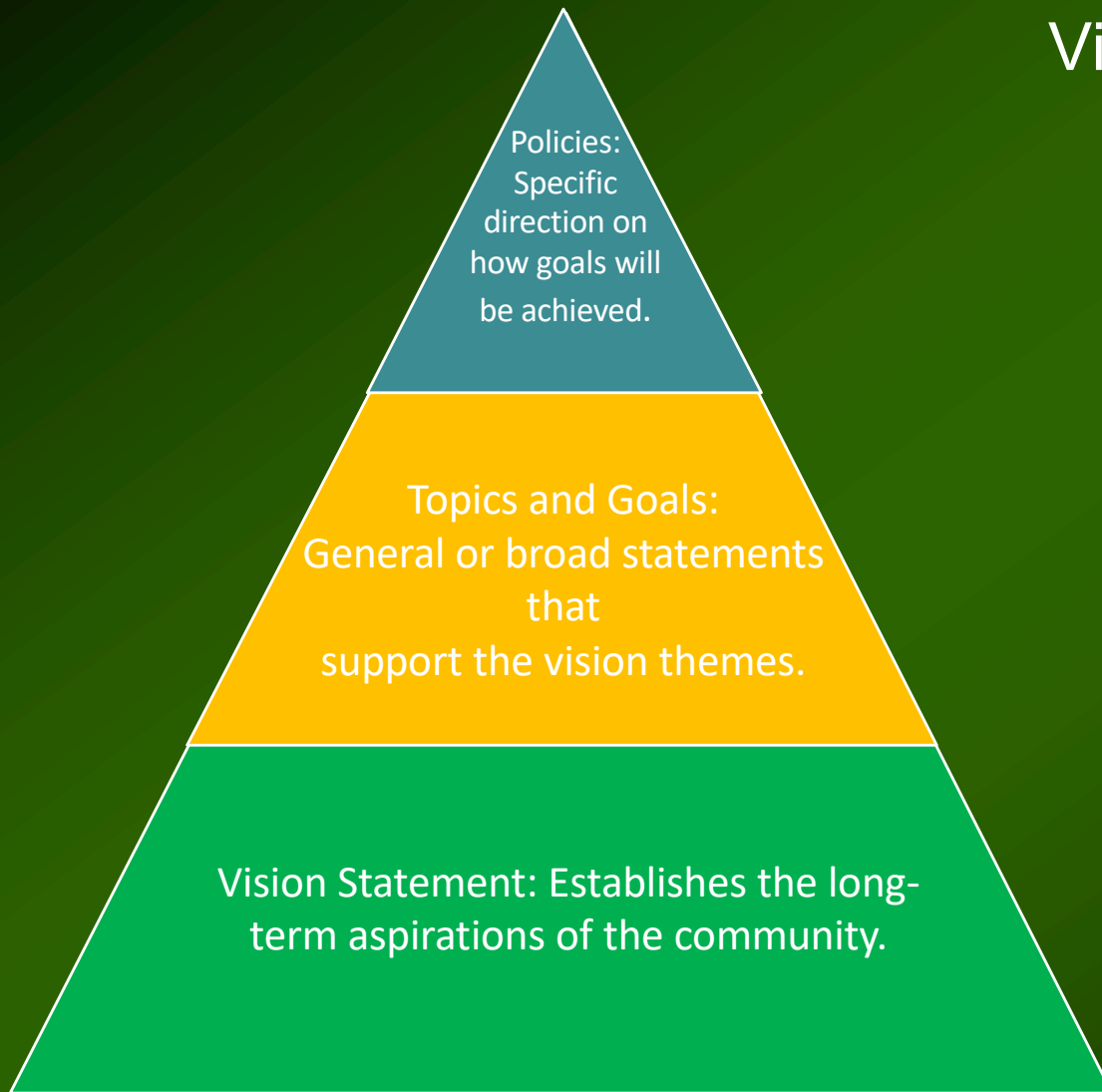
Steady State Comprehensive Plan



Vision: True Sustainability

Maintain and Enhance
Residents Quality of Life,
while
Limiting Impacts on Natural
Systems.

Steady State Comprehensive Plan



Vision: True Sustainability

Explicitly Challenge
the Growth Narrative.

Steady State Comprehensive Plan



2018 Comprehensive Plan
City of Bloomington



“...The Bloomington Comprehensive Plan addresses not merely the physical growth of our community, but recognizes the variety of human and natural systems interactions necessary to achieve a sustainable community with a high quality of life for our residents.

We acknowledge that healthy natural systems are the foundation for flourishing human societies. Globally, the scale of human impact is undermining this foundation, and we must reverse the course of environmental degradation to ensure a livable future. “

Steady State Comprehensive Plan



2018 Comprehensive Plan
City of Bloomington

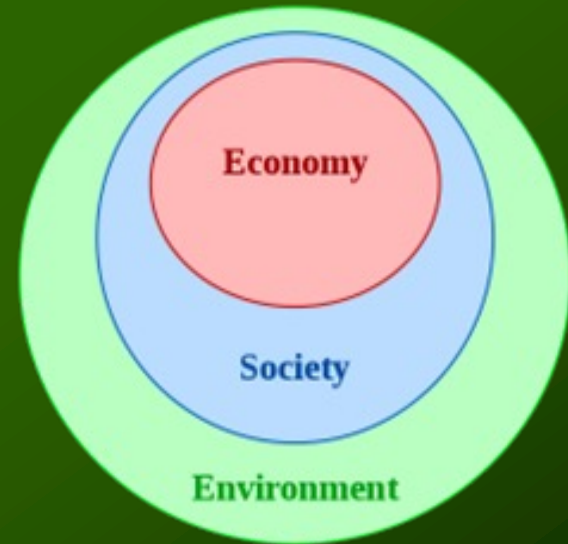
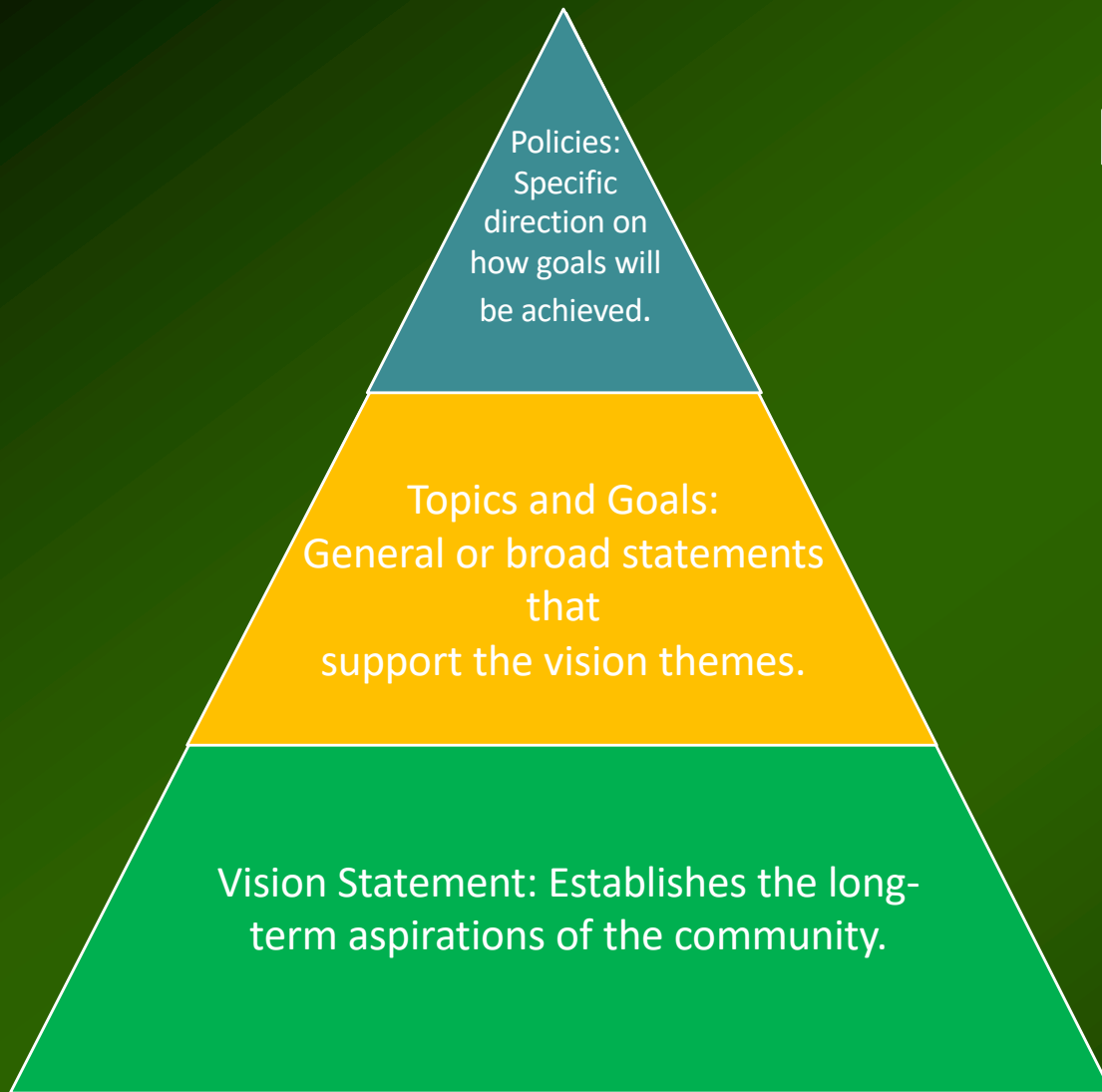


“Our community has resolved to do our share to protect the biosphere, and critical to this protection is recognizing that infinite growth is neither possible nor desirable in a finite world.

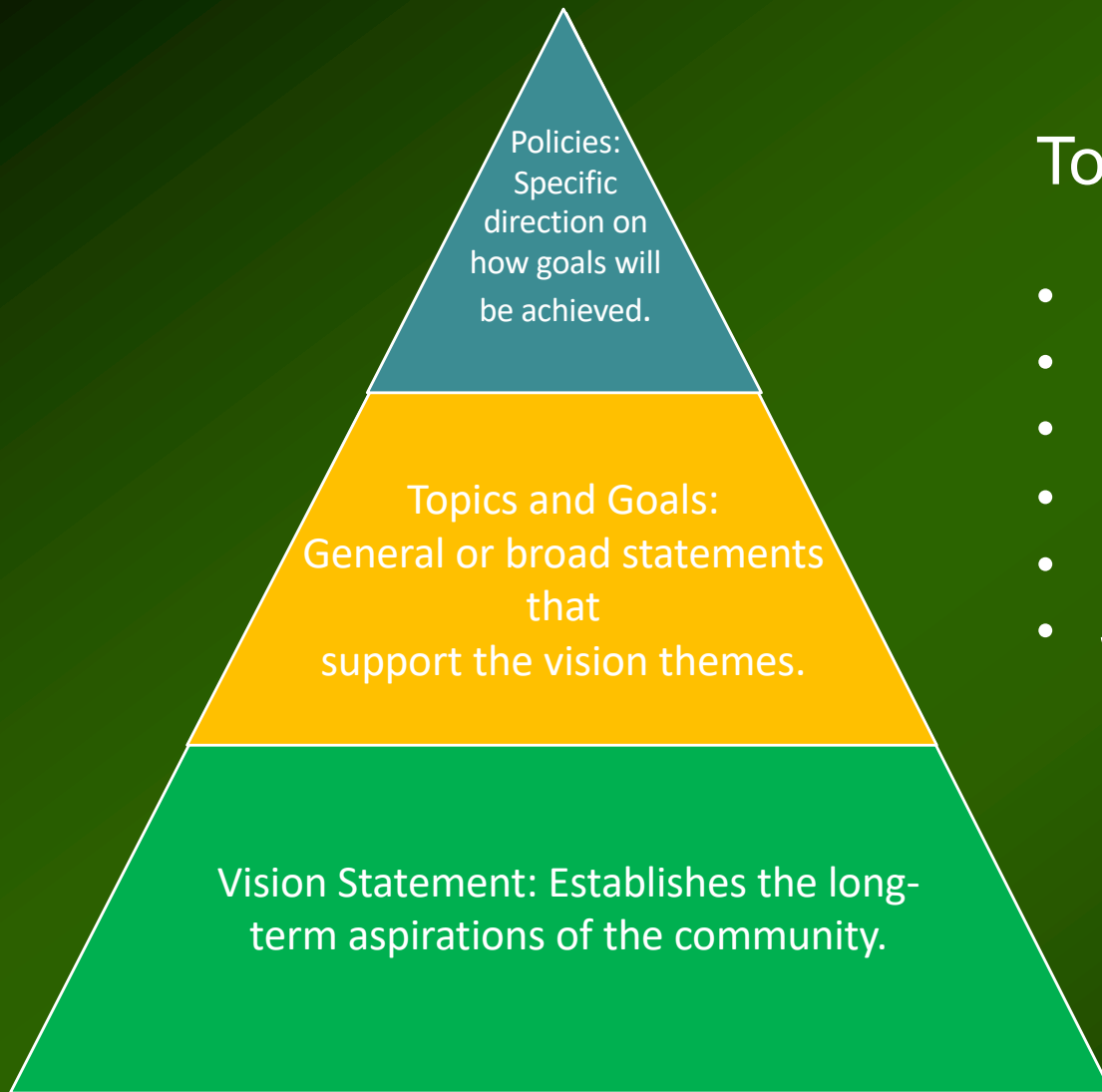
To track our community’s progress toward greater sustainability and resilience, we require measures of success that are inclusive of environmental, social, and economic well-being. Measures community resilience should replace inadequate progress measures based on aggregate growth in conversion of our natural world to built capital, and corresponding increases in resources and energy. “

Steady State Comprehensive Plan

In other words, a
Recognition of Limits



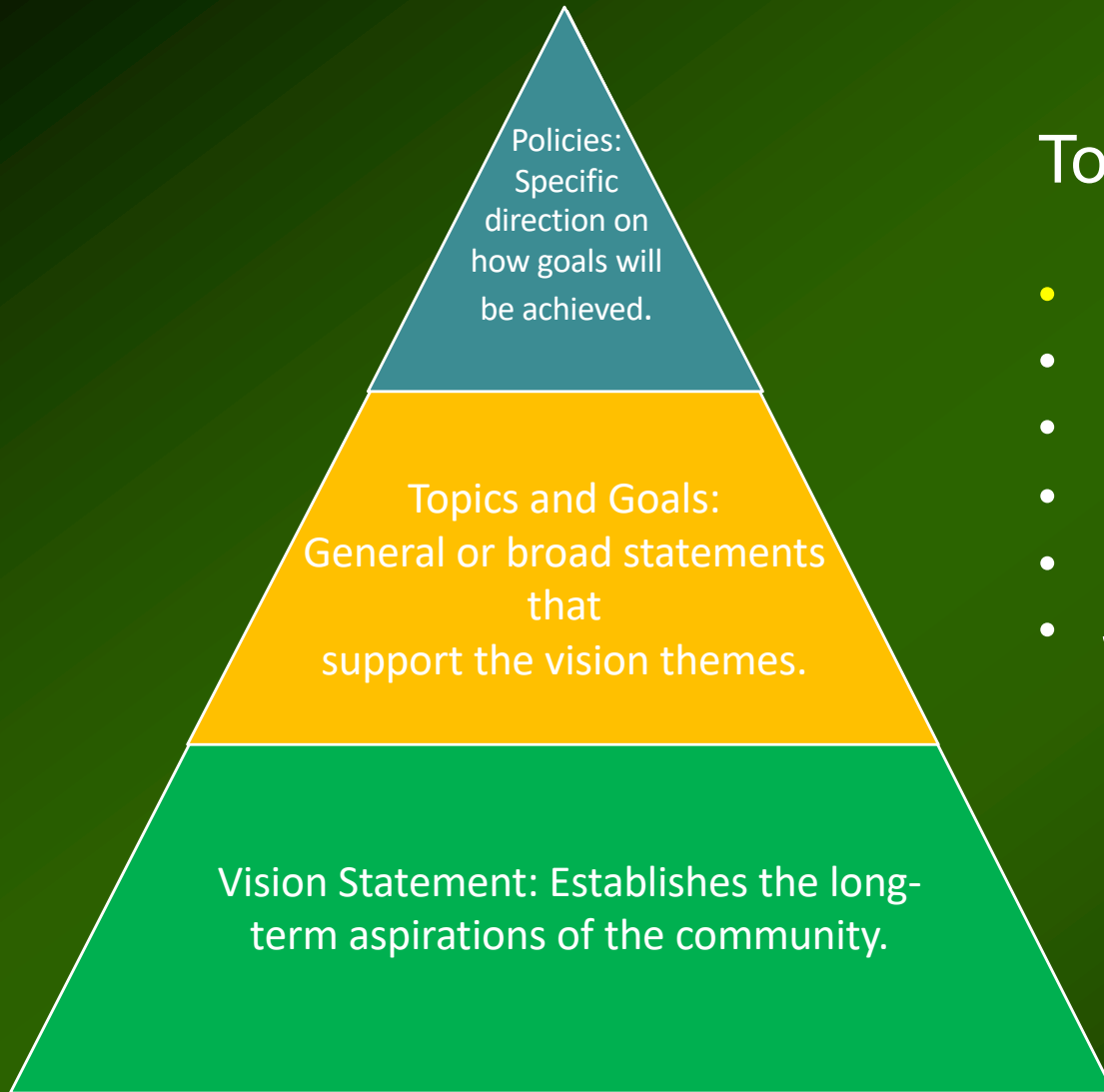
Steady State Comprehensive Plan



Topics and Goals:

- Preserve Natural Capital
- Build Social Capital
- Land Use – Limiting Development
- Low Energy Use Transportation
- High Quality Public Works
- Sustainable Economics and Re-localization

Steady State Comprehensive Plan



Topics and Goals:

- **Preserve Natural Capital**
- Build Social Capital
- Land Use – Limiting Development
- Low Energy Use Transportation
- High Quality Public Works
- Sustainable Economics and Re-localization

Preserving Our County's Natural Capital

Preserving Our County's Natural Capital

1. **Biocapacity:** Preserving and enhancing the biocapacity of our jurisdiction. Limiting human development and impact while enhancing human quality of life, health, and wellbeing are mutually supportive activities and are fundamental to guiding policy.

Preserving Our County's Natural Capital

- 1. Biocapacity:** Preserving and enhancing the biocapacity of our jurisdiction. Limiting human development and impact while enhancing human quality of life, health, and wellbeing are mutually supportive activities and are fundamental to guiding policy.
- 2. Habitat Protection:** Utilize Mapping County Greenspace and Environmentally Sensitive Areas to protect important habitat by purchasing land and by using conservation easements and slope and watershed restrictions.

Preserving Our County's Natural Capital

- 1. Biocapacity:** Preserving and enhancing the biocapacity of our jurisdiction. Limiting human development and impact while enhancing human quality of life, health, and wellbeing are mutually supportive activities and are fundamental to guiding policy.
- 2. Habitat Protection:** Utilize Mapping County Greenspace and Environmentally Sensitive Areas to protect important habitat by purchasing land and by using conservation easements and slope and watershed restrictions.
- 3. Development Impacts:** Utilize Assessing Ecological Services for the Community to determine present and future impacts of development within the county.

Preserving Our County's Natural Capital

- 1. Biocapacity:** Preserving and enhancing the biocapacity of our jurisdiction. Limiting human development and impact while enhancing human quality of life, health, and wellbeing are mutually supportive activities and are fundamental to guiding policy.
- 2. Habitat Protection:** Utilize Mapping County Greenspace and Environmentally Sensitive Areas to protect important habitat by purchasing land and by using conservation easements and slope and watershed restrictions.
- 3. Development Impacts:** Utilize Assessing Ecological Services for the Community to determine present and future impacts of development within the county.
- 4. Impact Fees:** Apply the Growth Impact Assessment to help set impact fees for future development.

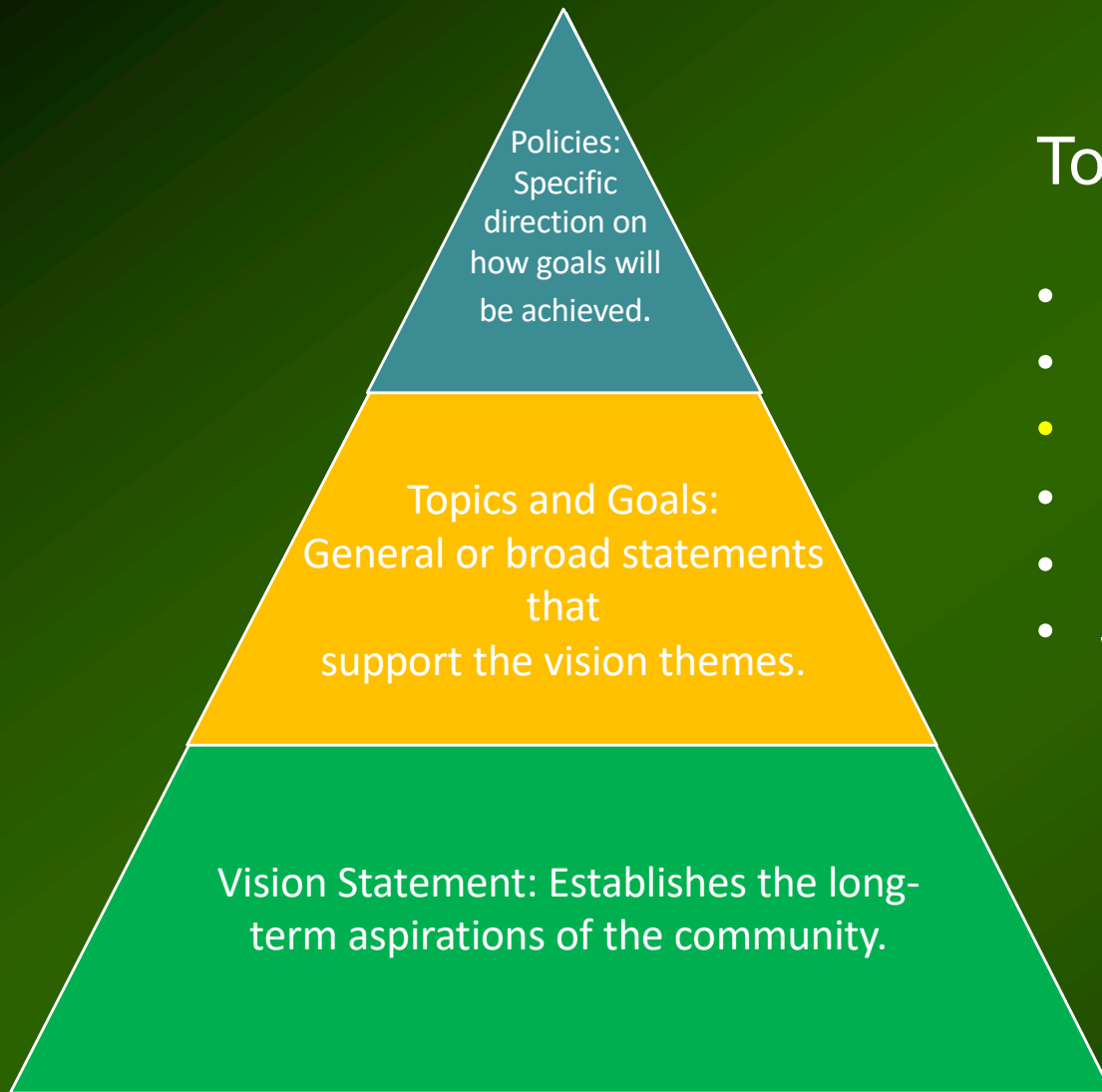
Preserving Our County's Natural Capital

- 1. Biocapacity:** Preserving and enhancing the biocapacity of our jurisdiction. Limiting human development and impact while enhancing human quality of life, health, and wellbeing are mutually supportive activities and are fundamental to guiding policy.
- 2. Habitat Protection:** Utilize Mapping County Greenspace and Environmentally Sensitive Areas to protect important habitat by purchasing land and by using conservation easements and slope and watershed restrictions.
- 3. Development Impacts:** Utilize Assessing Ecological Services for the Community (to determine present and future impacts of development within the county.
- 4. Impact Fees:** Apply the Growth Impact Assessment to help set impact fees for future development.
- 5. Farmland Protection:** Implement zoning changes and incentives for farmland to protect it from development pressures.

Preserving Our County's Natural Capital

- 1. Biocapacity:** Preserving and enhancing the biocapacity of our jurisdiction. Limiting human development and impact while enhancing human quality of life, health, and wellbeing are mutually supportive activities and are fundamental to guiding policy.
- 2. Habitat Protection:** Utilize Mapping County Greenspace and Environmentally Sensitive Areas to protect important habitat by purchasing land and by using conservation easements and slope and watershed restrictions.
- 3. Development Impacts:** Utilize Assessing Ecological Services for the Community (to determine present and future impacts of development within the county).
- 4. Impact Fees:** Apply the Growth Impact Assessment to help set impact fees for future development.
- 5. Farmland Protection:** Implement zoning changes and incentives for farmland to protect it from development pressures.
- 6. Ecological Footprint:** Conduct An Ecological Footprint Analysis of the County as a benchmark and to frame policy decisions to reduce the community's ecological footprint or maintain our current impact.

Steady State Comprehensive Plan



Topics and Goals:

- Preserve Natural Capital
- Build Social Capital
- **Land Use – Limiting Development**
- Low Energy Use Transportation
- High Quality Public Works
- Sustainable Economics and Re-localization

Land Use – Limiting Development

Land Use – Limiting Development

- 1. Implementing Concurrency and Internalizing Costs:** All areas intended for development must have adequate infrastructure already built in from county departments including Utilities, Public Works, Transportation, and Public Safety before proceeding with any future development. The cost of any added capacity must be borne by the developer and not passed on to existing residents.

Land Use – Limiting Development

- 1. Implementing Concurrency and Internalizing Costs:** All areas intended for development must have adequate infrastructure already built in from county departments including Utilities, Public Works, Transportation, and Public Safety before proceeding with any future development. The cost of any added capacity must be borne by the developer and not passed on to existing residents.
- 2. Setting the Urban Service Boundary:** Establish urban services boundaries based on an interlocal agreement that limits development by capping growth within their municipal borders.

Land Use – Limiting Development

- 1. Implementing Concurrency and Internalizing Costs:** All areas intended for development must have adequate infrastructure already built in from county departments including Utilities, Public Works, Transportation, and Public Safety before proceeding with any future development. The cost of any added capacity must be borne by the developer and not passed on to existing residents.
- 2. Setting the Urban Service Boundary:** Establish urban services boundaries based on an interlocal agreement that limits development by capping growth within their municipal borders.
- 3. Expanding our Conservation Areas:** Working with local land trusts, conservation groups, and the County Environmental Commission, we will continue to expand our county's natural land holdings and develop conservation easements to safeguard habitat for wildlife and protect the ecological services on which we depend.

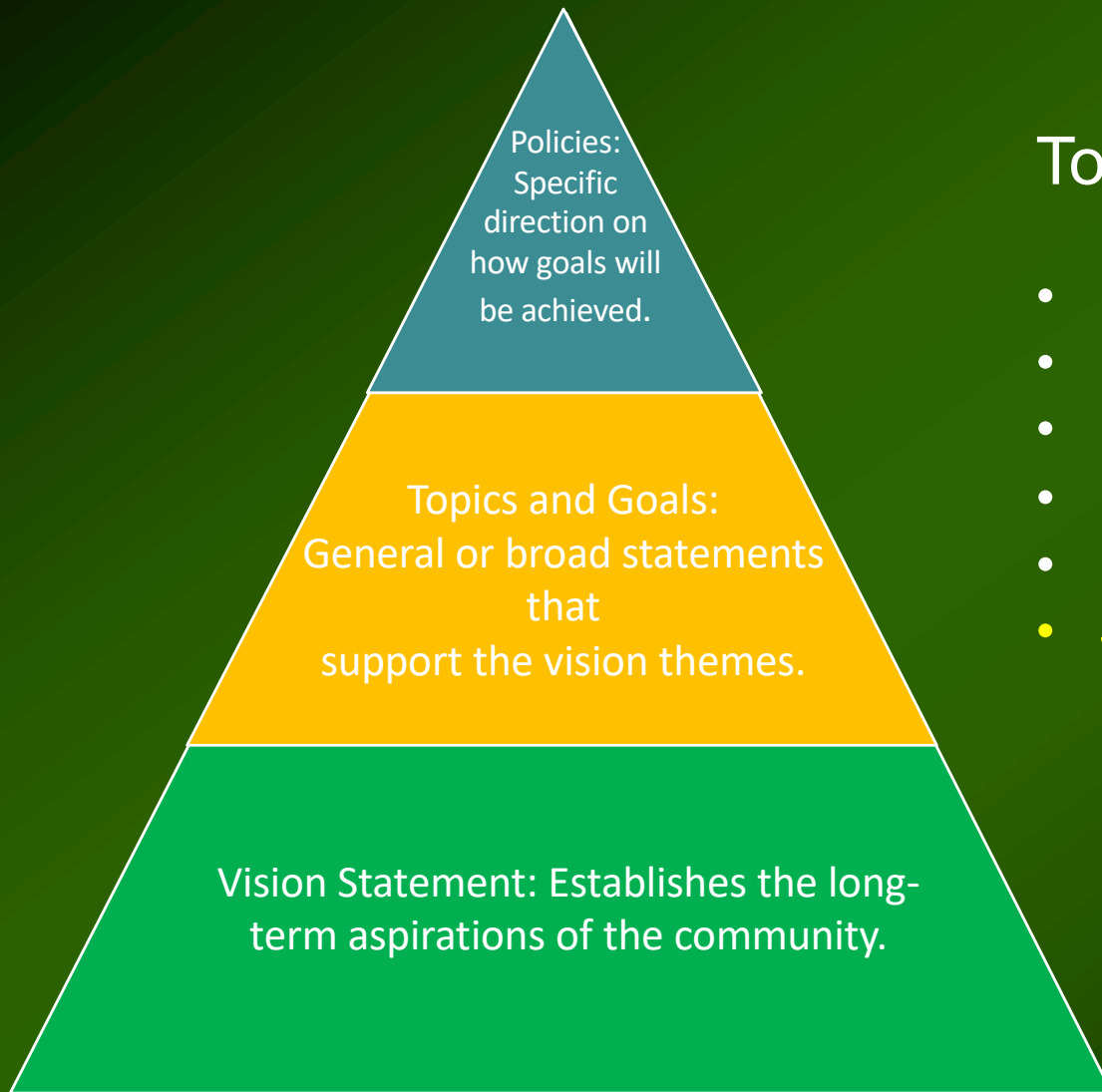
Land Use – Limiting Development

- 1. Implementing Concurrency and Internalizing Costs:** All areas intended for development must have adequate infrastructure already built in from county departments including Utilities, Public Works, Transportation, and Public Safety before proceeding with any future development. The cost of any added capacity must be borne by the developer and not passed on to existing residents.
- 2. Setting— the Urban Service Boundary:** Establish urban services boundaries based on an interlocal agreement that limits development by capping growth within their municipal borders.
- 3. Expanding our Conservation Areas:** Working with local land trusts, conservation groups, and the County Environmental Commission, we will continue to expand our county's natural land holdings and develop conservation easements to safeguard habitat for wildlife and protect the ecological services on which we depend.
- 4. Defining Rural Preservation Areas:** We aim to preserve farmland to limit development by allowing only low-density add-ons to existing structures.

Land Use – Limiting Development

- 1. Implementing Concurrency and Internalizing Costs:** All areas intended for development must have adequate infrastructure already built in from county departments including Utilities, Public Works, Transportation, and Public Safety before proceeding with any future development. The cost of any added capacity must be borne by the developer and not passed on to existing residents.
- 2. Setting— the Urban Service Boundary:** Establish urban services boundaries based on an interlocal agreement that limits development by capping growth within their municipal borders.
- 3. Expanding our Conservation Areas:** Working with local land trusts, conservation groups, and the County Environmental Commission, we will continue to expand our county's natural land holdings and develop conservation easements to safeguard habitat for wildlife and protect the ecological services on which we depend.
- 4. Defining Rural Preservation Areas:** We aim to preserve farmland to limit development by allowing only low-density add-ons to existing structures.
- 5. Preserving Compact Form:** Concentrating the grey infrastructure areas of habitation, commerce, and connectivity to minimize the impact on the green infrastructure of forests, wetlands, slopes, and farmland.

Steady State Comprehensive Plan



Topics and Goals:

- Preserve Natural Capital
- Build Social Capital
- Land Use – Limiting Development
- Low Energy Use Transportation
- High Quality Public Works
- **Sustainable Economics and Re-localization**

Economic Development and Community Services

Economic Development and Community Services

1. **Local Business:** Our County Economic and Sustainable Development Department prioritizes supporting local businesses as a driver of county prosperity.

Economic Development and Community Services

- 1. Local Business:** Our County Economic and Sustainable Development Department prioritizes supporting local businesses as a driver of county prosperity.
- 2. Import Substitution:** Working with our economic development partners within the community, we will implement our *Report on Import Substitution* to develop ways to retain wealth in our community by substituting imported goods with sustainable, locally sourced products such as food, fiber, and lumber.

Economic Development and Community Services

- 1. Local Business:** Our County Economic and Sustainable Development Department prioritizes supporting local businesses as a driver of county prosperity.
- 2. Import Substitution:** Working with our economic development partners within the community, we will implement our *Report on Import Substitution* to develop ways to retain wealth in our community by substituting imported goods with sustainable, locally sourced products such as food, fiber, and lumber.
- 3. Value-Adding:** Assist business to value-add to locally produced goods.

Economic Development and Community Services

- 1. Local Business:** Our County Economic and Sustainable Development Department prioritizes supporting local businesses as a driver of county prosperity.
- 2. Import Substitution:** Working with our economic development partners within the community, we will implement our *Report on Import Substitution* to develop ways to retain wealth in our community by substituting imported goods with sustainable, locally sourced products such as food, fiber, and lumber.
- 3. Value-Adding:** Assist business to value-add to locally produced goods.
- 4. Circular Economy:** Focus our Economic and Sustainable Development Department on creating a circular economy of reuse, recycling, repair, and refurbishing of materials and products.

Economic Development and Community Services

- 1. Local Business:** Our County Economic and Sustainable Development Department prioritizes supporting local businesses as a driver of county prosperity.
- 2. Import Substitution:** Working with our economic development partners within the community, we will implement our *Report on Import Substitution* to develop ways to retain wealth in our community by substituting imported goods with sustainable, locally sourced products such as food, fiber, and lumber.
- 3. Value-Adding:** Assist business to value-add to locally produced goods.
- 4. Circular Economy:** Focus our Economic and Sustainable Development Department on creating a circular economy of reuse, recycling, repair, and refurbishing of materials and products.
- 5. Food Hub and Farm Stops:** Invest public funds to develop a local food economy by providing storage and processing facilities, and space for daily local food markets apart from our weekly farmers markets.

Keep Our Counties Great: Implementing Limits to Growth at the Local Level.

1. Understanding a steady state economy and near-term limits.
2. Why focusing on the local is important and strategic.
3. What is a comprehensive plan, and what would steady-state plan consist of?
4. What else can a county do?
5. Examples of great counties.

Additional Plans and Analyses that are complementary to a Steady-State Approach:

Action Plans

Sustainability Action Plan: Describes how to achieve a community aligned within a nested model of sustainability.

Climate Action: Outlines the goal of carbon neutrality through local generation of energy, commitment to energy conservation, and by developing carbon sinks.

Planning for an Energy Transition: Lays out a plan for reducing our demand for imported energy in the context of declining global energy production.

Local Food Action Plan: Offers a vision for expanding the local food economy to protect farmland, provide employment, and provide for county security.

Import Substitution as a Means to Build Local Wealth: Describes a strategy for reducing our community's impact and building economic diversity and community resiliency by producing goods locally.

Additional Plans and Analyses that are complementary to a Steady-State Approach:

County Resolution as Signatory to CASSE's (Center for the Advancement of the Steady State Economy) *Position Statement on Economic Growth*.

Systems Thinking and Comprehensive Planning. A report developed by the County Sustainability Commission, accepted by the County Commissioners as an advisory document.

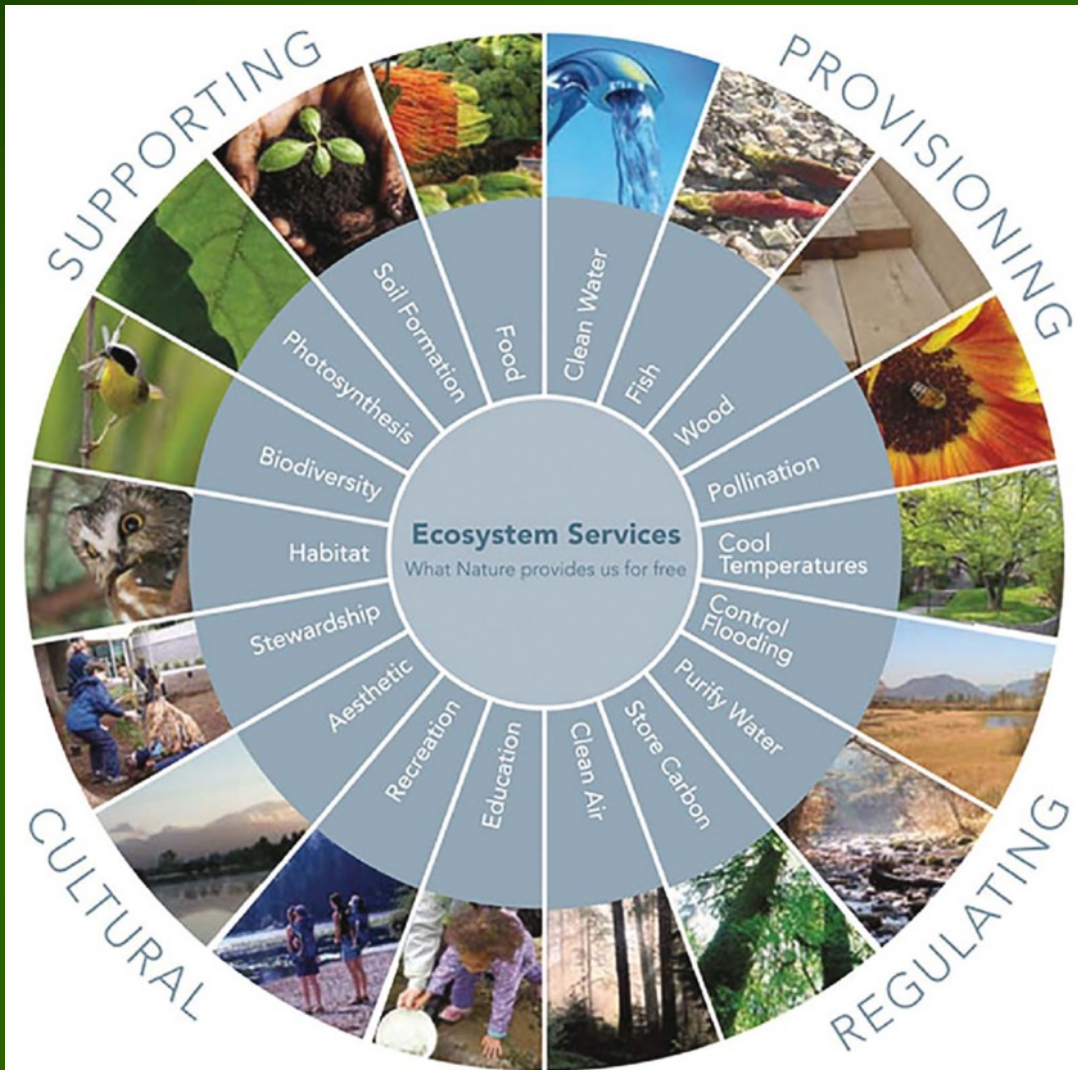
Mapping County Greenspace and Environmentally Sensitive Areas. A GIS heatmap of sensitivity with proposed natural area wildlife corridors. Co-developed by County Planning Department and the County Environmental Commission.

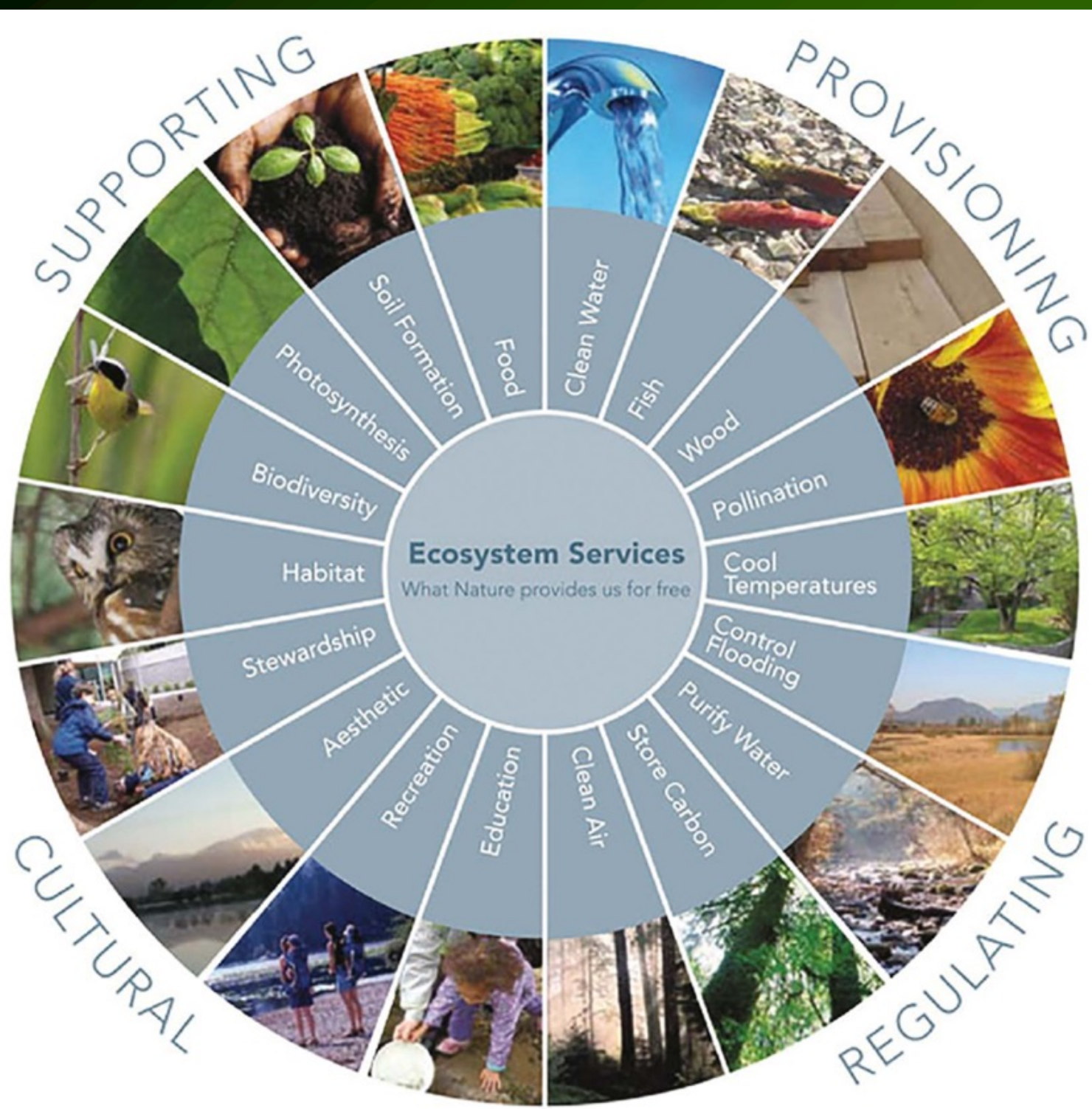
Growth Impact Assessment – calculating costs of any further development to our county's villages and towns. Consultant Report.

Report on Import Substitution prepared by the County Economic Development Commission. Exploring how public investment in local sectors of the economy can reduce economic leakage, and re-circulate money within our local and regional economy.

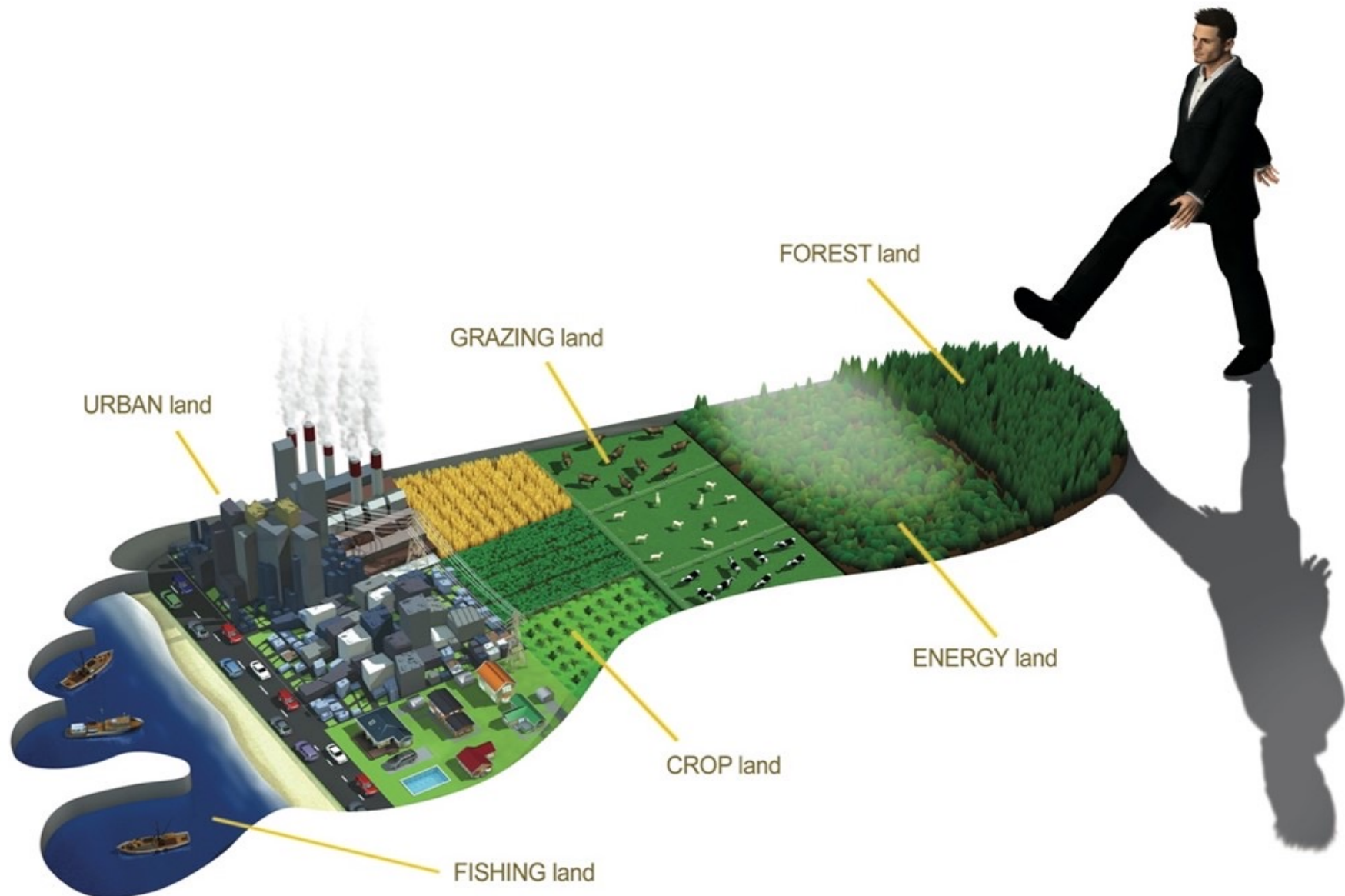
Additional Plans and Analyses that are complementary to a Steady-State Approach:

County Environmental Commission, *Assessing Ecological Services for the Community.*





Planning Department Report, *An Ecological Footprint Analysis of the County.*
Analysis of our carrying capacity and our current impact on our biocapacity.

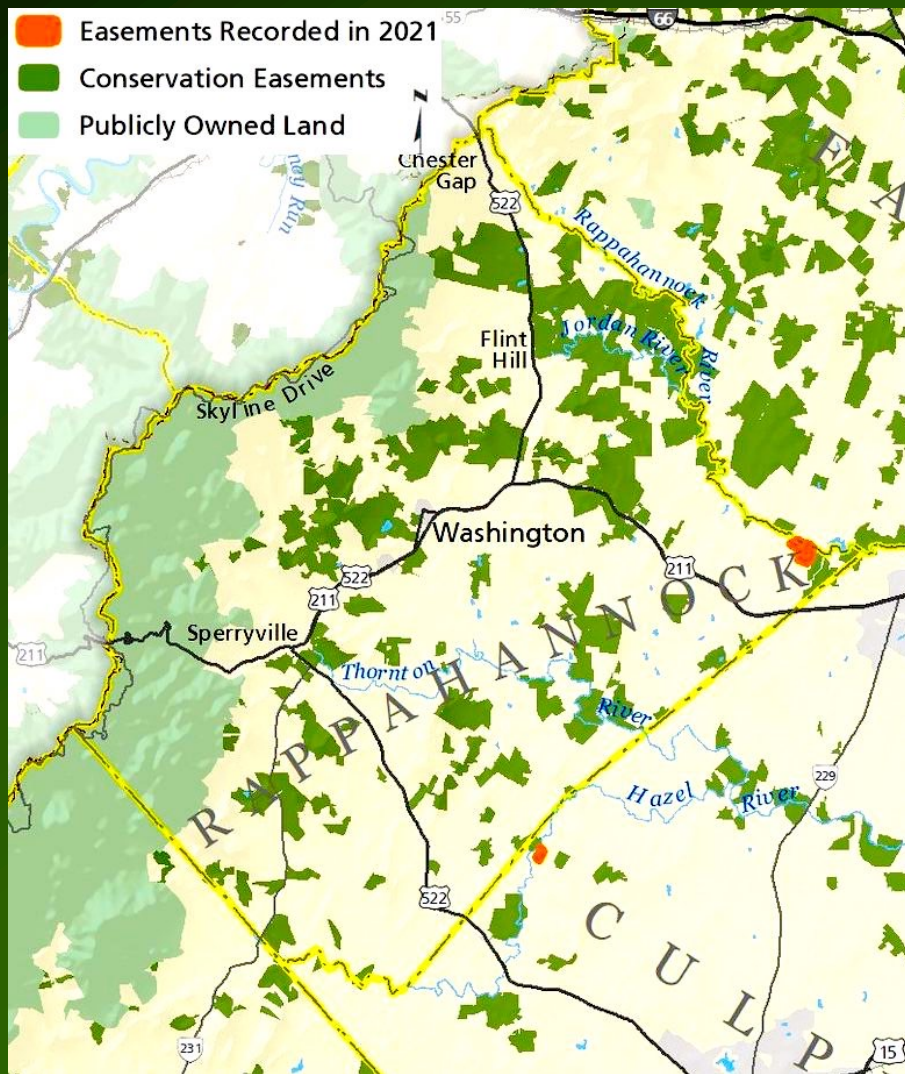


Keep Our Counties Great: Implementing Limits to Growth at the Local Level.

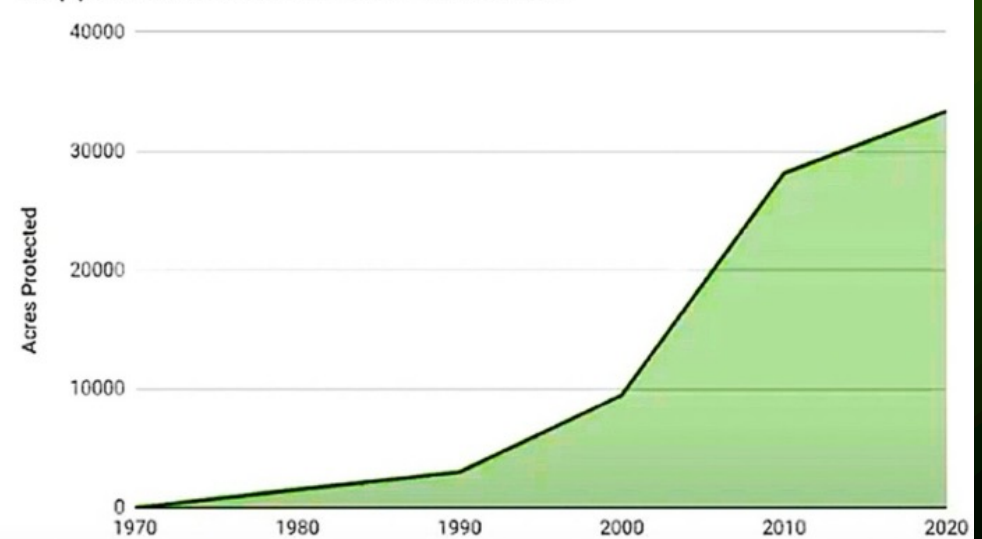
1. Understanding a steady state economy and near-term limits.
2. Why focusing on the local is important and strategic.
3. What is a comprehensive plan, and what would steady-state plan consist of?
4. What else can a county do?
5. Examples of great counties.

Keeping the County Great: Rappahannock's Steady State

<https://steadystate.org/category/steady-state-herald/>



Rappahannock Easements 1970-2020

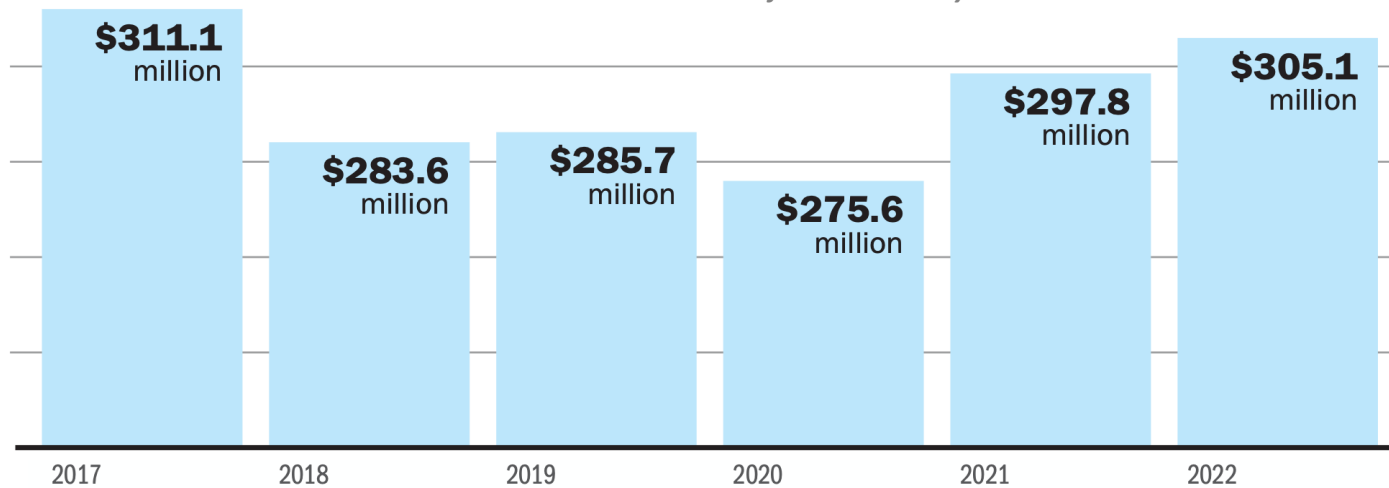


Keeping the County Great: Rappahannock's Steady State

<https://steadystate.org/category/steady-state-herald/>

GDP by year for the county - 2017 to 2022

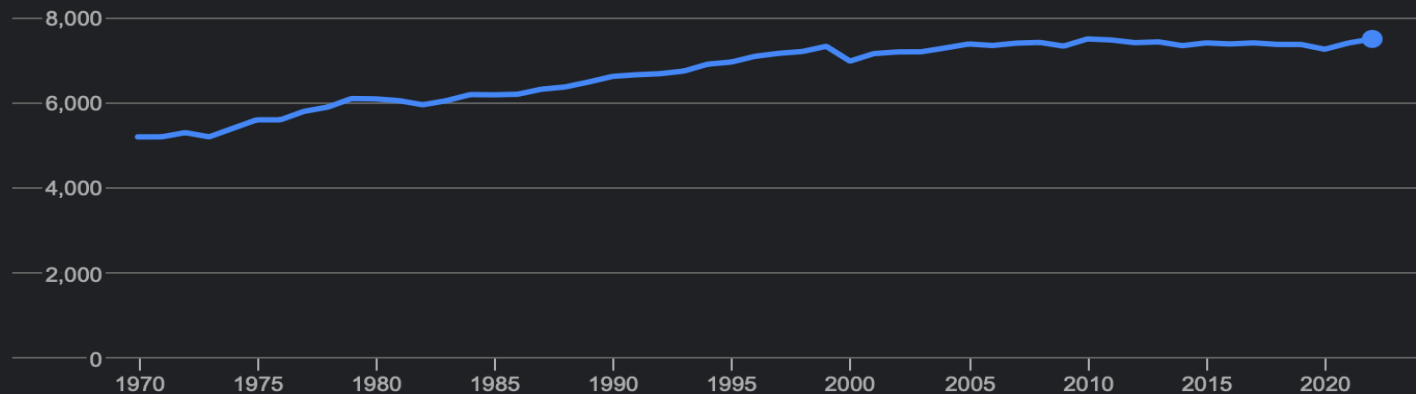
Source: U.S. Bureau of Economic Analysis - Local Area Gross Domestic Product



Rappahannock County / Population

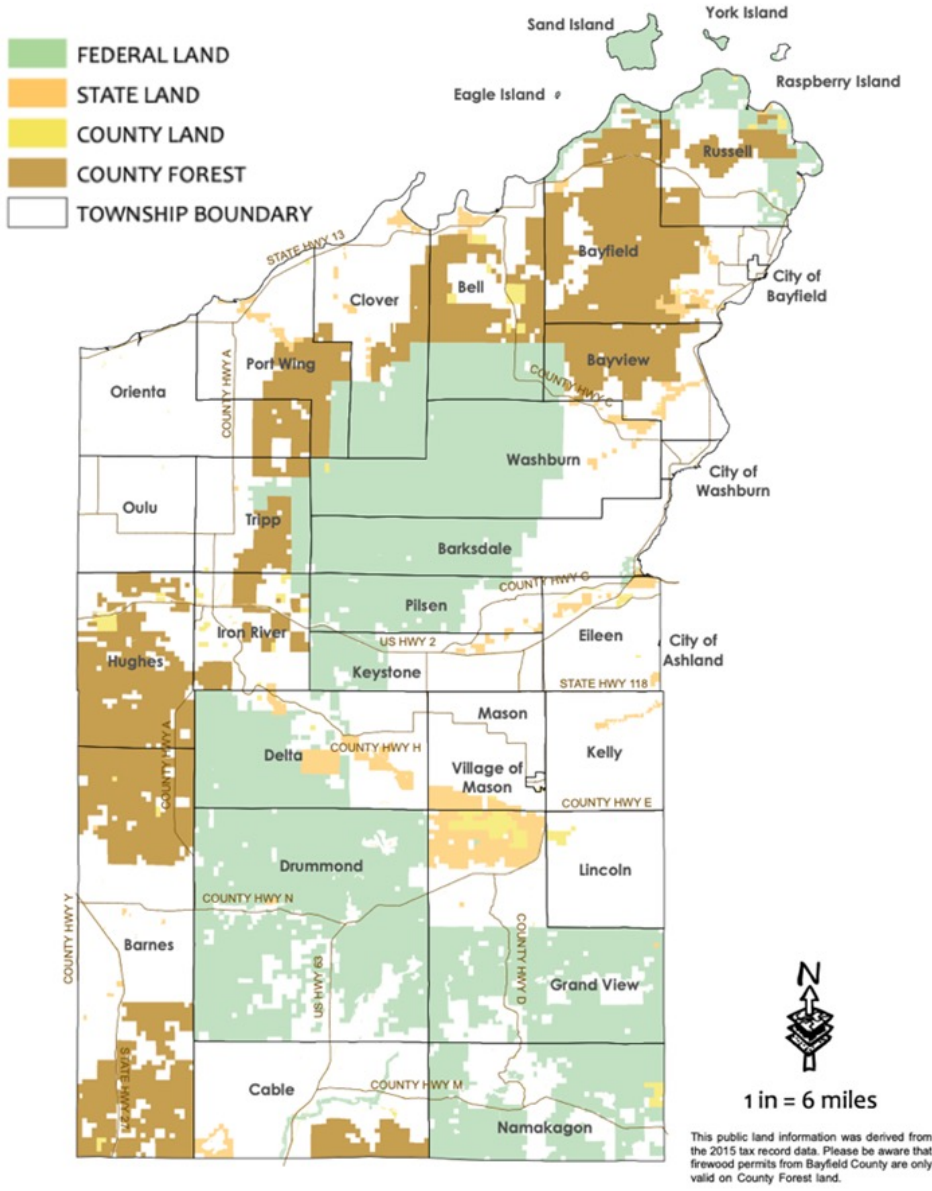
<https://datacommons.org>

7,502 (2022)



The Steady State of Beautiful Bayfield County

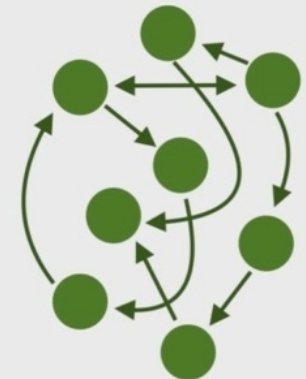
PUBLIC LAND IN BAYFIELD COUNTY



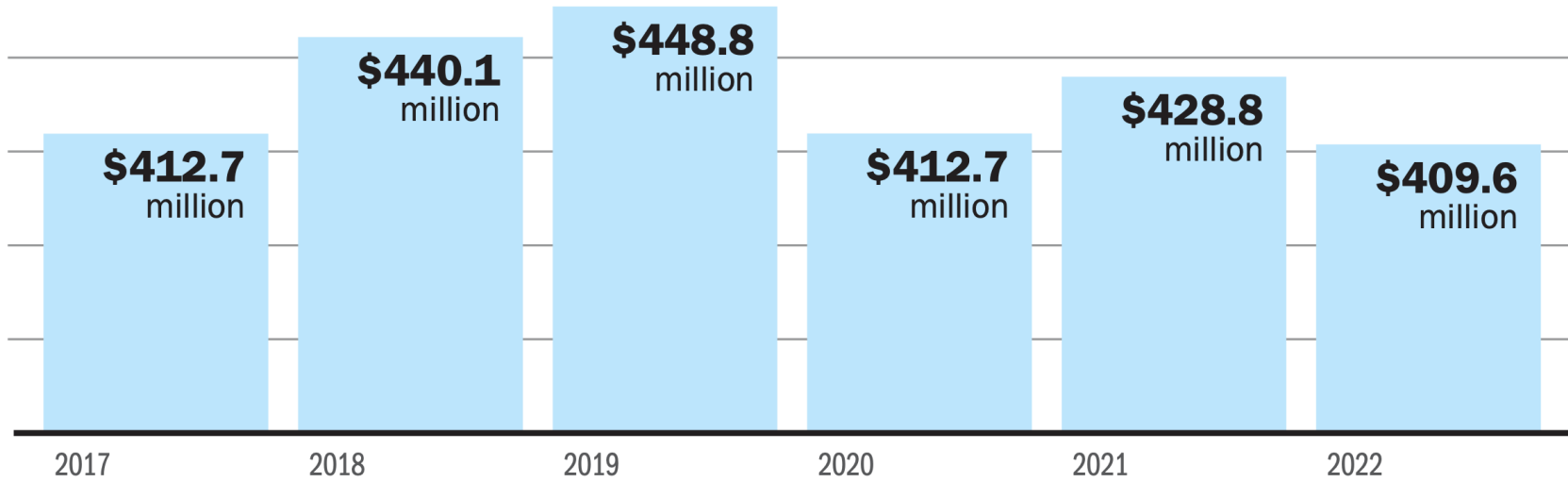
Linear Thinking



Systems Thinking



The Steady State of Beautiful Bayfield County

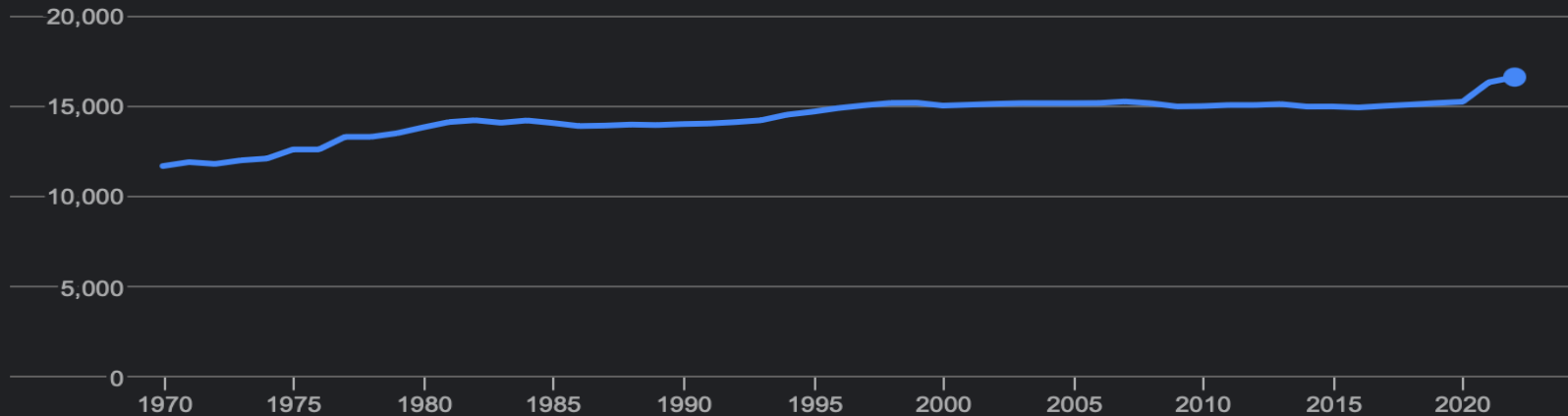


Source: U.S. Bureau of Economic Analysis - Local Area Gross Domestic Product, 2022 vintage.

Bayfield County / Population

<https://datacommons.org>

16,608 (2022)



CASSE Programs and Projects

- Editorial Program
 - *Steady State Herald*
 - Steady State Press
 - *Steady Stater* (newsletter)
- Communications Program
 - Social media
 - *Steady Stater* (podcast)
 - Press releases
- Policy Program
 - Steady State Economy Act development
 - *Keep Our Counties Great* campaign
 - Steady Statesmanship
- Outreach Program
 - CASSE chapters
 - CASSE interns
- Development Program
 - CASSE members
 - CASSE donors
 - Foundation grants
- Administration Program
 - Program execution
 - Personnel management
 - Finances and accounting

Center for the Advancement of the Steady State Economy



CASSE

www.steadystate.org